



ガラス精密洗浄

私達の強み

- * 微細な有機・無機汚れに対応
- * 洗浄～検査～梱包まで
一貫体制
- * ご支給品の受託洗浄も
承ります



松浪硝子ファインガラスカタログ

仕上げを支える、高品位洗浄技術

当社では、ガラス加工後に残る粒子や汚れを除去するため、用途に応じて超音波洗浄や枚葉式ブラシ洗浄を使い分け、高い清浄度を実現しています。ヤケや粒子、有機・無機汚れなど多様な表面汚染に対応可能で、洗浄後のガラスは高い濡れ性を有します。洗浄から検査・梱包までをクリーンルーム内で一貫処理し、外観品質を保ったまま出荷が可能です。ご支給品の受託洗浄も承っておりますので、ぜひご相談ください。

◆超音波洗浄機（US 洗浄機）

電力を高周波電気信号に変換する「発振器」+ 電気信号を超音波信号に変換する「振動子」+ 洗浄液（水、洗浄剤）の3つから構成され、弊社では7槽、12槽、15槽のUS洗浄機があり、合計4台保有しています。

●洗浄可能範囲 状況に応じご相談ください。

外形寸法：9.0x6.0 mm～500x500 mm

厚み寸法：t0.1～10 mm



◆枚葉式ブラシ洗浄機

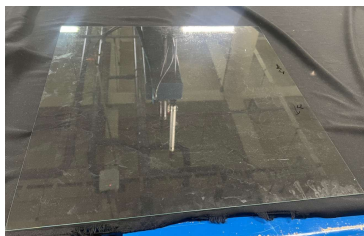
ブラシの回転を用いた洗浄方法。洗浄液をかけながら回転するブラシを使って硝子をこすって洗浄する。600角まで洗浄可能なラインから内製の小型洗浄機などを含め10台以上を保有しています。

●洗浄可能範囲 状況に応じご相談ください。

外形寸法：200x120 mm～600x600 mm

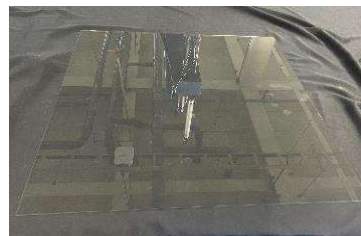
厚み寸法：t0.4～5 mm

洗浄前



汚れによる光の反射のぼやけ・不均一、濃淡のムラなど

洗浄後



汚れ除去により、光の鮮明な反射、全体に均一なトーン

その他の加工・仕様にも対応しますのでご相談ください。
弊社ではガラス調達～切断・形状加工・コーティングまで
社内一貫生産で対応可能です。



Vol. 53



High-Precision Glass Cleaning

Our Strengths

- * Capable of removing fine organic and inorganic contaminants
- * Integrated process from cleaning to inspection and packaging
- * Contract cleaning of customer-supplied materials also available



Matsunami Glass Fine
Glass Catalog

High-Quality Cleaning Technology That Supports a Perfect Finish

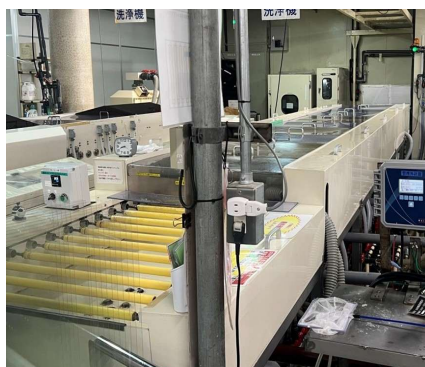
At our company, we achieve a high level of cleanliness by selecting the appropriate cleaning method—such as ultrasonic cleaning or single-substrate brush cleaning—based on the application, to remove particles and contaminants remaining after glass processing. We can address various types of surface contamination, including burns, particles, and both organic and inorganic residues. The cleaned glass exhibits excellent wettability. The entire process—from cleaning to inspection and packaging—is carried out within a cleanroom environment, allowing us to maintain visual quality and ensure reliable delivery. We also accept contract cleaning of customer-supplied materials, so please feel free to consult with us.

◆ Ultrasonic Cleaner (US Cleaner)

An ultrasonic cleaning machine consists of three main components: a “generator” that converts electric power into high-frequency electrical signals, a “transducer” that converts those signals into ultrasonic waves, and a cleaning solution (water or detergent). At our facility, we have a total of four ultrasonic cleaning machines, configured with 7-tank, 12-tank, and 15-tank systems.

- Cleanable range: Please consult with us based on your specific needs.

External dimensions: 9.0 × 6.0 mm to 500 × 500 mm
Thickness: 0.1 mm to 10 mm



◆ Single-Wafer Brush Cleaner

This is a cleaning method that uses rotating brushes. Glass is scrubbed clean by rotating brushes while a cleaning solution is applied. We have over 10 brush cleaning machines, including both in-house-developed compact units and large-scale systems capable of cleaning substrates up to 600 mm square.

- Cleanable range: Please consult with us based on your specific requirements.

External dimensions: 200 × 120 mm to 600 × 600 mm
Thickness: 0.4 mm to 5 mm

Pre-Cleaning



Blurring and unevenness of light refraction caused by contamination, as well as variations in brightness and shading

Post-Cleaning



Contaminant removal results in sharp light reflection and even overall tone.

We also support other processing methods and specifications, so please feel free to consult with us. At our company, we offer a fully integrated in-house production system covering everything from glass procurement to cutting, shaping, and coating.